

Congratulations on the purchase of your Dakota/ Olivia Twin Sleigh Bed. This bed has been crafted to the highest standards of quality and safety and will give you many years of enjoyment and practical use.

Since this bed is a natural wood product, there will be variations in color and grain, and minor checking may occur. This is normal and does not compromise the integrity of your bed. In fact, variation in character of solid hardwood is integral to the beauty and appeal of hardwood furniture, and distinguishes it from prefabricated, synthetic and composite materials.

On this insert you will find a list of the hardware and bed parts, as well as detailed assembly instructions. Assembly is quite simple, and requires only a flat head screwdriver and a Phillips head screwdriver. The use of a power drill with Phillips head attachment is helpful but not necessary. Assembly will be most easily accomplished if you take the time to carefully sort the hardware and familiarize yourself with the function of each piece.

If you need assistance with assembly, part replacement, or any other matter, please contact the toll-free Epoch Design Customer Service Team from Monday through Friday, 9 AM-5PM PST at 1 (800) 589-7990. You may also email your request or comments to info@epochbydesign.com and a customer service representative will respond.

Thank you and Enjoy

HARDWARE



8x 110mm bolts
 Used to connect end boards to side rails



8x Barrel nuts
 Used to secure bolts



24x 30mm slat screws
 Used to secure slats to rails

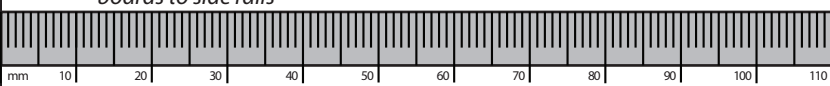


8x Hole plugs
 Used to cover bolt holes

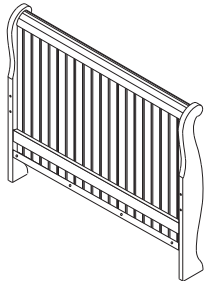


1x Hex key
 Used to tighten bolt hardware

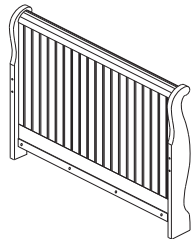
Guide



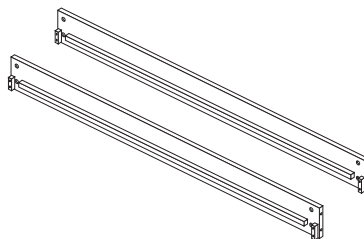
BED PARTS



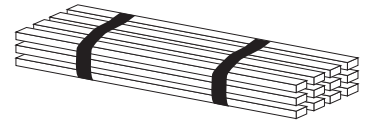
1x Taller end board
 Used for headboard



1x Shorter end board
 Used for footboard

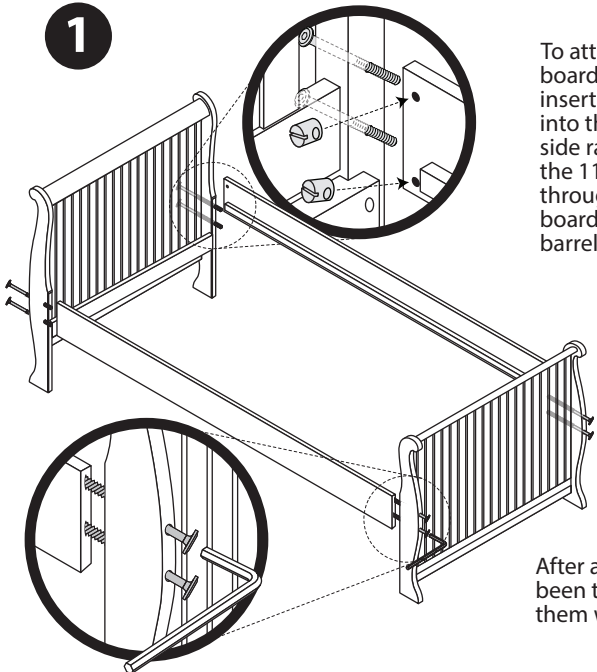


2x Side rails
 Used to connect end boards



1x Slat bundle
 Rests on side rails and supports mattress (strap side down)

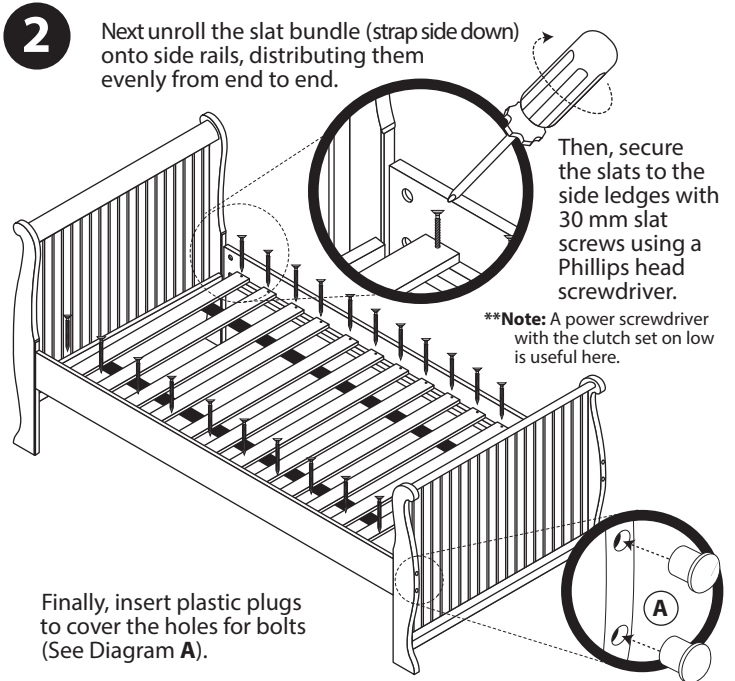
1



To attach the end boards to the side rails, insert the barrel nuts into the holes in the side rails. Then insert the 110 mm bolts through the end boards and into the barrel nuts.

After all the bolts have been threaded, tighten them with a Hex key.

2



Next unroll the slat bundle (strap side down) onto side rails, distributing them evenly from end to end.

Then, secure the slats to the side ledges with 30 mm slat screws using a Phillips head screwdriver.

****Note:** A power screwdriver with the clutch set on low is useful here.

Finally, insert plastic plugs to cover the holes for bolts (See Diagram A).

HAVE QUESTIONS OR CONCERNS? CALL US FIRST: 1-800-589-7990